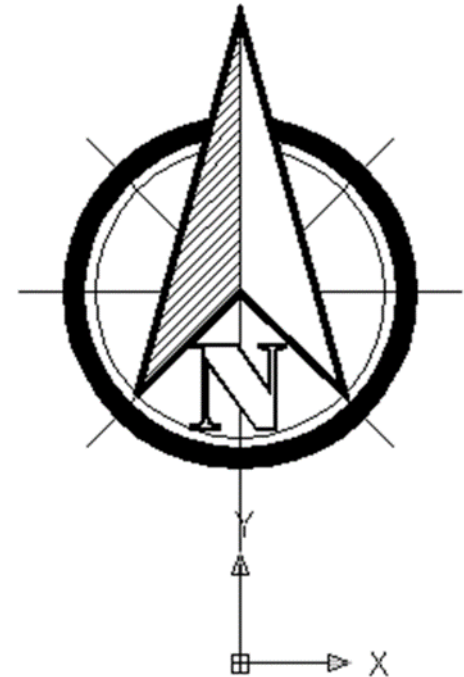




Mainstreaming Menstrual Hygiene in Public Basic Education in the Philippines

Presentation Outline

- What is there on MHM in Schools in the Philippine public education system?
- How were these realized?
 - Research
 - Policy advocacy
 - MHM in post-disaster
 - Systems building
 - Curriculum integration
- What is coming up?



What is there now?

2012

2016

2017

Policy and Standards

unite for
children

unicef 

What is there now?

Policy and standards

- MHM is a key component of WASH in Schools under the National WinS Policy
- WinS Policy provides for a gender-responsive WinS program as a whole

DepEd ORDER
No. 10, s. 2016

19 FEB 2016

**POLICY AND GUIDELINES FOR THE COMPREHENSIVE WATER, SANITATION
AND HYGIENE IN SCHOOLS (WINS) PROGRAM**

3. Hygiene: All students in school shall perform supervised daily group handwashing with soap and toothbrushing with fluoride, while a system and support mechanisms for effective menstrual hygiene management shall be ensured in all schools;

What is there now?

2012

2016

Curriculum materials

2017

Policy and standards

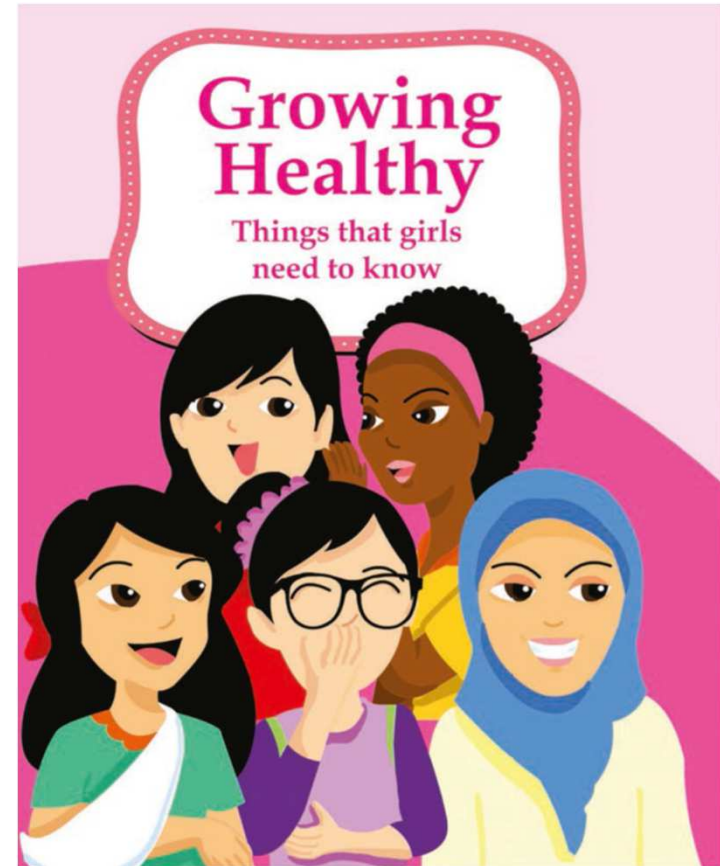
unite for
children

unicef 

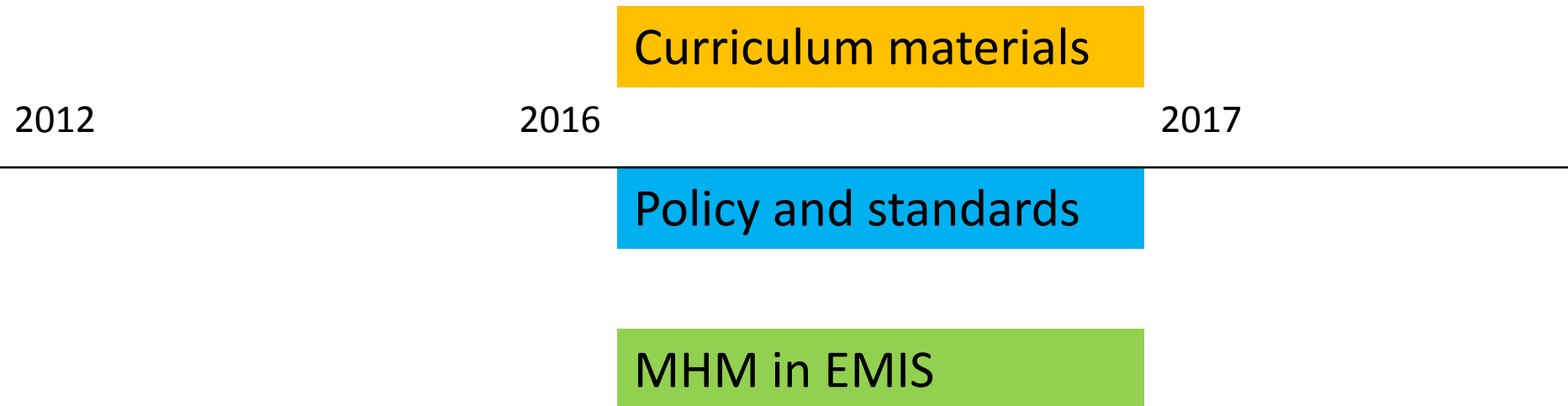
What is there now?

Curriculum material

- MHM booklet adopted for nationwide use
 - Information material on MHM
 - Personal tool for adolescent girls
- Materials developed and used at sub-national level by DepED divisions and partner organizations



What is there now?



What is there now?

MHM in EMIS

- MHM indicator - access to sanitary pads - in DepED Enhanced Basic Education Information System (E-BEIS)
- Integrates MHM in national level planning
- Enables SDG reporting on MHM

Box 13. MENSTRUAL HYGIENE, SY 2016-2017 (As of June 17, 2016)

1. Does the school have a provision for availability of sanitary pads?

Yes (Proceed to 1.1)

No

1.1 Where can the learners avail the sanitary pads?

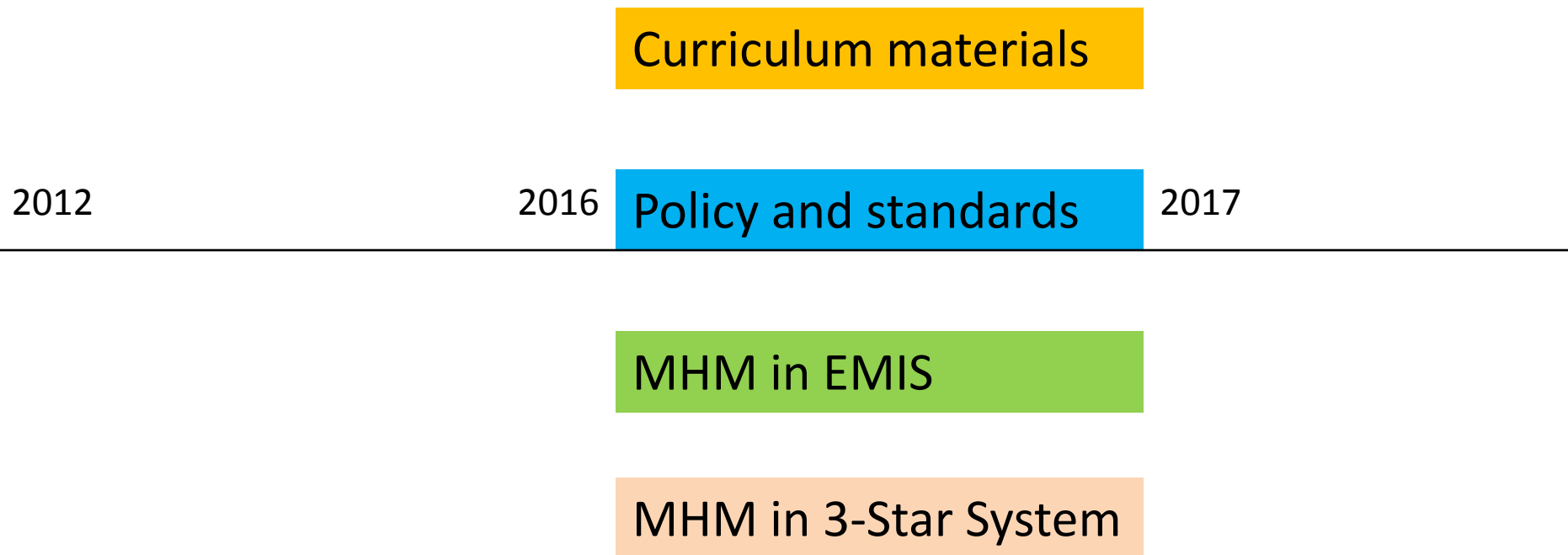
School Canteen

School Clinic

Guidance Office

Others, please specify _____

What is there now?



What is there now?

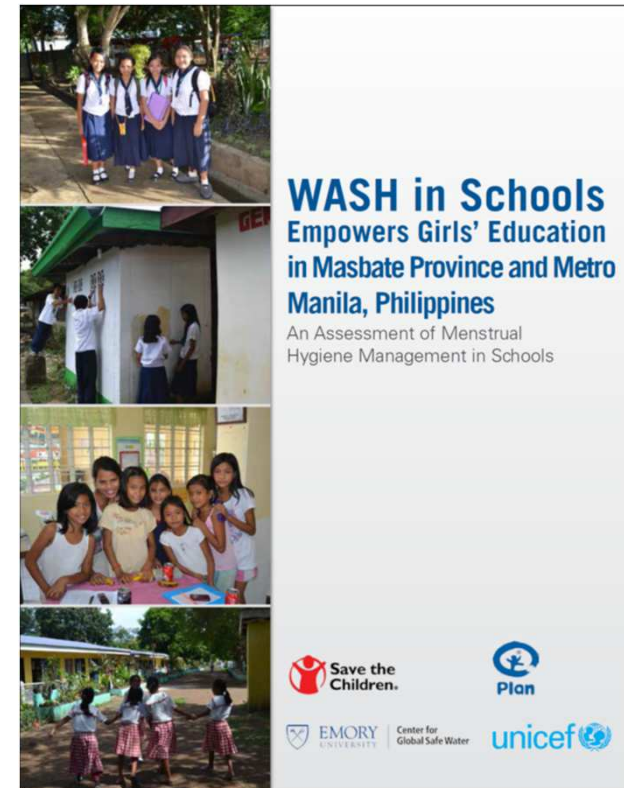
MHM in National WinS 3-Star Approach

- MHM components in WinS Three-Star rubrics
 - Availability of sanitary pads
 - Disposal of MHM
 - Private, secure functional toilets
 - Rest space for MHM
- Sanitary pads in schools is non-negotiable requirement to reach 1-star and progress

How were these realized?

Research

- MHM in schools research in 2012 - made visible the invisible
 - Challenges to girls school participation and performance arising from MHM issues
 - Gaps
 - Knowledge and awareness
 - Access to MHM supplies
 - WASH facilities



How were these realized?

Policy formulation and advocacy

- Findings of research ushered discussions and inclusion of MHM standards in WinS policy formulation
- Championing MHM - DepED School Health Division took up MHM as priority programme area
- MHM and the bigger and controversial subject of adolescent reproductive health and sexuality

How were these realized

MHM in post-disaster

- Gaps in post-disaster work
 - TS WASHI (2011) - gaps in MHM in emergency response
 - TS Ketsana (2012) - gaps in WASH in schools in disaster response and recovery
 - TS Haiyan and Bohol Earthquake (2013) – limited MHM outreach in emergency response
- “How can psycho-social interventions in schools be effective when girls worry and experience discomfort from menstrual challenges?”



Photos courtesy of IMC

How were these realized?

Opportunities in Haiyan Recovery

- WinS recovery needed a pathway
 - 3-star approach adopted to post-Haiyan context
 - Draft national WinS policy adopted to regional level policy
 - Three-star Approach integrated MHM
- MHM as “new” WASH component → entry point for capacity-building on MHM
- MHM supplies donation → conduit for providing MHM info material for girls



How were these realized?

Systems Building for WinS Policy

- Development of WinS Policy Implementing Mechanisms
 - WinS Three-Star Rubrics – incremental approach to achieving national standards
 - DepED systems applied to WinS
 - School-Based Management Approach
 - Quality assurance
 - Field technical assistance
 - Recognition and Incentive System for WinS
 - WinS On-line Monitoring System
- Expansion of WinS indicators in E-BEIS to capture key indicators in WinS Policy

How were these realized?

Curriculum integration

- DepED's biggest strength – the Curriculum
- Engagement of Bureau of Curriculum Development
 - Review and adoption of MHM Booklet
 - Review of Kto12 curriculum on MHM and ASRH-related content and learning outcomes

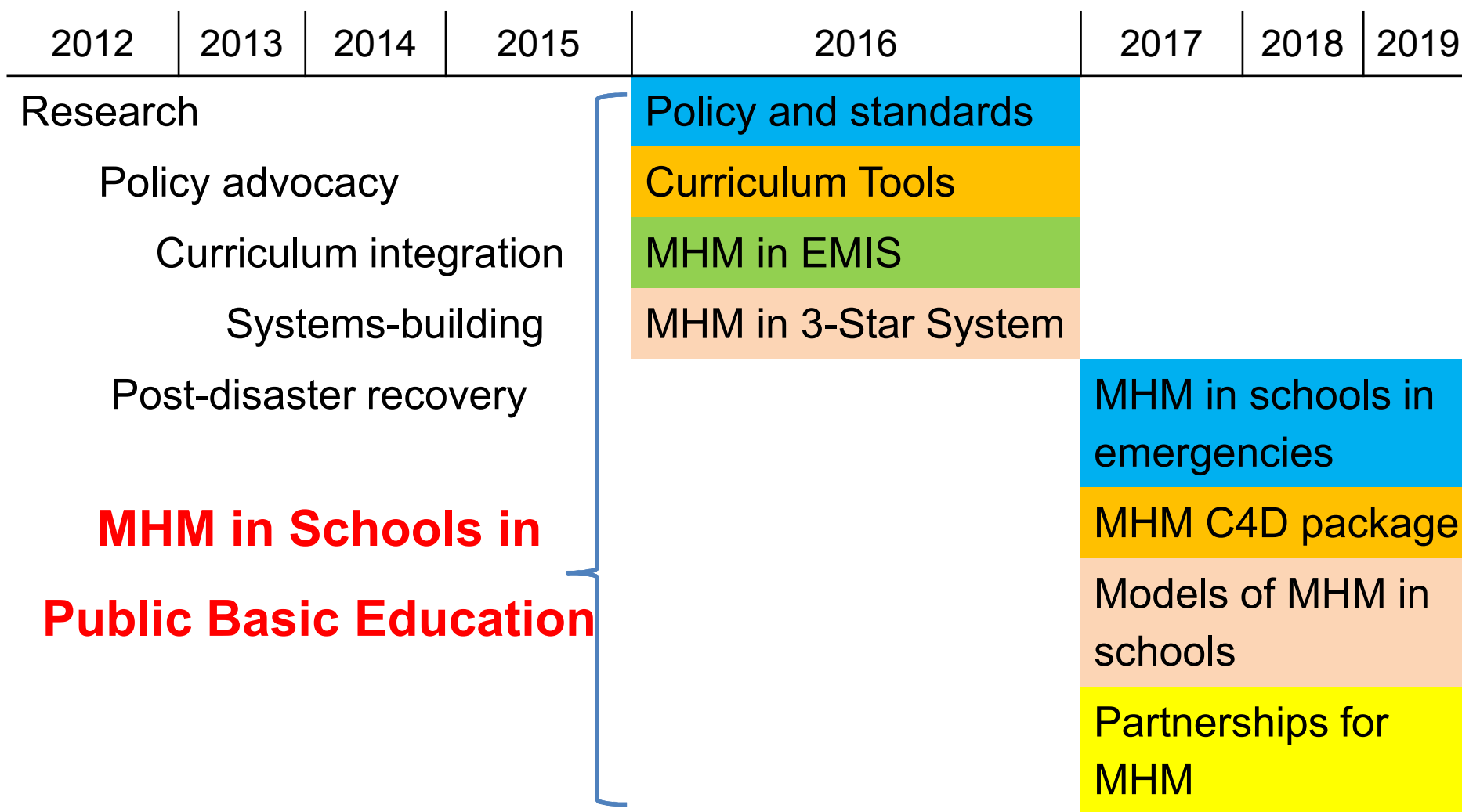
How were these realized?

2012	2013	2014	2015	2016	2017	2018	2019
Research				Policy and standards			
Policy advocacy				Curriculum Tools			
Curriculum integration				MHM in EMIS			
Systems-building				MHM in 3-Star System			
Post-disaster recovery							

What is coming up?

- Guidelines and mechanisms for MHM in schools in emergencies
- MHM communication for development (C4D) package for curriculum integration
- Models of MHM in schools implementation
- Partnerships for MHM in schools
 - Inter-agency collaboration
 - Civil-society alignment
 - Private-sector support

MHM in Public Basic Education



THANK YOU!

For more information, please contact

Jon Michael R. Villasenor
WASH in Schools Program
jmvillasenor@unicef.org

United Nations Children's Fund
31st flr. Yuchengco Tower, RCBC Plaza
Ayala Ave., Makati City, Philippines
www.unicef.org

© United Nations Children's Fund
March 2016



Photo by J. Haver

